



**Anchal**  
**25 Years\***  
of challenges  
& commitments



*Working with Persons with Disabilities for positive change*

# Anchal Charitable Trust

## ANNUAL REPORT 2021-22

We believe in building an inclusive society free from discrimination, where persons with disabilities become contributing members living with dignity and respect.

*For additional information please refer to [www.anchalindia.org](http://www.anchalindia.org) or [www.anchal.org](http://www.anchal.org)*

## CONTENT

- I. List of Abbreviations
- II. Message from Director's desk
- III. Anchal at Glance
- IV. Acknowledgement
- V. ACT Geographic Coverage
- VI. Present Involvement (Activities) of the Organisation
  - ❖ Target Intervention – One
  - ❖ Target Intervention – Two
  - ❖ Target Intervention – Three

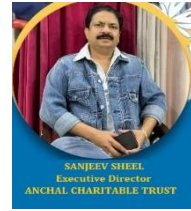
}

Delhi State AIDS Control Society

- ❖ Tech Mahindra – Children with disability – Promoting Inclusion of Persons with Disabilities –Supported by Tech Mahindra
- ❖ NIPMAN Foundation
- ❖ Heart and Hand for the Handicapped (HHH)
- ❖ Azim Premji Philanthropic
- ❖ HUL
- ❖ Anchal Healthcare Centre (AHC)
- ❖ Support and service during pandemic COVID 19
- ❖ Advocacy and Networking
- ❖ Capacity Building

## LIST OF ABBREVIATIONS

1. ACT: Anchal Charitable Trust
2. CBR: Community Based Rehabilitation
3. FSW: Female Sex Worker
4. STD: Sexually Transmitted Disease
5. HIV: Human Immunodeficiency Virus
6. DSACS: Delhi State AIDS Control Society
7. CwDs: Children with Disabilities
8. PwDs: Persons with Disabilities
9. AFOs: Ankle Foot Orthosis
10. RTI: Right to Information
11. MCD: Municipal Corporation of Delhi
12. SDMRC: School Disaster Management Resource Centre
13. MRC: Maternal Resource Centre
14. RMNCH+ A: Reproductive Maternal Neonatal & Child Health  
+ Adolescent
15. ANM: Auxiliary Nurse & Midwife
16. ASHA: Accredited Social Health Activist
17. AWW: Anganwadi Worker

**Message from Director's Desk**

Every year **Anchal Charitable Trust** human initiates amazing programmes which predominantly focuses on offering the best assistance, guidance, support and escorting people with disabilities in their endeavors. We have complete belief in our people and the organization is always at the forefront leading our beneficiaries and their pursuits towards fruition.

In this year, 2021-22, **Anchal Charitable Trust** hosted events showcasing the inherent aptitude of people with disabilities via conducting numerous talent activities. The remarkable events which bring together the greater minds advocating inclusivity helped us in proclaiming to the society that, "We are not behind.

The beginning of the year 2021 has pushed us into a pandemic which has been the most difficult period for the disabled and poorer communities. Our Relief Camps were erected at various cities offering respite to the affected and bringing back lives to normal. Our relief team has been doing a commendable job in reaching out to the far-off regions and distributing relief kits, medical necessities and food to people in need.

On a personal note, I would like to extend my gratitude and appreciation to the Govt of India, and to the other Ministries for their undying support. A special thanks to the **Azim Premji Foundation** for their contributions to special children's. Further thanking all those who have supported us last year, we are grateful to you and hoping for the continued synergies to transcend time. Also hoping to augment our reach with newer associations paving the way towards empowering the persons with disabilities and to reach our Goal by providing comprehensive solutions to the disabled and underserved communities.

Sanjeev Sheel  
Executive Director  
Anchal Charitable Trust

## ANCHAL CHARITABLE AT A GLANCE

ACT is a non-profit voluntary organization registered in June 1999, created solely with the purpose of helping the cause of mentally challenged, multiply disabled and autistic. It has grown into a leading regional level institution, working to enable and empower children and persons with disabilities for their full and effective participation in an inclusive society that respects their inherent dignity and autonomy.

ACT working towards facilitating opportunities to enable persons with disabilities and the underserved to keep pace with the rest of the society by providing quality education, day-care, nutritious food, vocational training and placement-based rehabilitation.

ACT is in three States with its 15 offices and burgeoning reach. It reaches out to beneficiaries from diverse verticals through multiple divisions spread across India. It is with considerable humility that we bring before you for the very first time, the very many awards our projects have been acclaimed for by local bodies, funding agencies and local and foreign governments.

The Anchal Charitable Trust has a very long list of acknowledgements and awards from individuals and organisations who are concerned and matter in world affairs.

### Our Vision

A social environment based on sustainable development, which accords every humane 'Right' and freedom of expression to the underserved without discrimination.

### Our MISSION

A happy, healthy and creative child whose rights are protected and honoured in a society that is built on respect for dignity, justice and equity for all.

### Legal:

Registered Society – Not for profit – S.35016/16/06/1999 / Delhi

Registered under 12 A: AAAAAA4113HE2021401

Registration under 80G: DEL-AE22921-28072011/871

FCRA registration No. 231650944

Ministry of Corporate Affairs Registration number/ CSR No- CSR00004190

## ACKNOWLEDGEMENTS

The impact of our work, that is represented in this report, is due in great measure to the generous support from our donors. We want to express our sincere gratitude to each one of you for the commitment you have shown to our cause and for helping us advance in our mission. ACT is grateful to its donors Azim Premji Foundation, Tech Mahindra, Save The Children, Nokia and Plan India for their support over the years.

A special thanks to Delhi State Aids Control Society for continuing their support over the years. A special thanks also to Heart and Hand for the Handicapped for supporting us during pandemic COVID 19. Contributions from all our other donors and supporters is deeply appreciated. Thanks to supporters like you, we delivered impactful results for persons with disabilities– your kindness and generosity makes it possible for us to make a difference.

Thanks to all the partners, collaborators, resource persons, federations and persons with disabilities for the cooperation received. If it weren't for your continuous support in carrying out work on the field, we would not have been able to bring about the change in the lives of persons with disabilities we were engaged with. Thanks to all the staff members and members of the Governing Body for the support and guidance received during the year.

I look forward to consolidating and strengthening the unique nature of our Organisation, as we stride the twin tracks of service delivery and a rights-based approach in our work.

## ACT GEOGRAPHIC COVERGAE

ACT area of activity covers a major portion of the North, North-East, East and Shahdara district of the National Capital Territory of Delhi and Uttar Pradesh– reaching out to around 70 resettlement colonies and slums in the mentioned districts under different projects. The organization presence can be seen in three states of India namely Delhi, UP and Uttaranchal.



### DELHI / NCR



North East District, East District, Shahdara District, North District, South District of Delhi & Vasundhara / Vaishali, NCR, UP



Haridwar, Rishikesh, Chamoli District, Rudraprayag District



Ghaziabad, Noida, Meerut

## PRESENT INVOLVEMENT OF THE ORGANISATION

### Current Programmes and Description of current programmes

- ❖ Target Intervention – One
  - ❖ Target Intervention – Two
  - ❖ Target Intervention – Three
- } Delhi State AIDS Control Society
- ❖ Tech Mahindra – Children with disability – Promoting Inclusion of Persons with Disabilities –Supported by Tech Mahindra
  - ❖ NIPMAN Foundation
  - ❖ Heart and Hand for the Handicapped (HHH)
  - ❖ Azim Premji Philanthropic
  - ❖ Anchal Healthcare Centre (AHC)

## PROGRAMME ACTIVITIES DETAIL INFORMATION

### 1. TI-Targeted Intervention HIV/AIDS

**Targeted Intervention on HIV /AIDS – Supported by DSACS/ NACO** since 2003 as ongoing programme covering 25000 HRGs. The projects focus towards reduction in the incidence of STD/HIV infection or re-infection among the high-risk group such as female sex workers and migrant workers community.

ACT aims at reducing the vulnerability to affected HIV/AIDS population most vulnerable to this virus. The targeted population includes female sex workers, migrant population and other at High-risk groups. Our volunteers care for the diseased, look after orphaned children or vulnerable to HIV/ AIDS.

We address the issue by developing effective models for AIDS prevention, care and support, Enhanced capacity of targeted population to reduce the vulnerability of mobile populations and their families. We advocate influencing changes in relevant laws, policies, and beliefs, practices based on effective and new models.

Prevention of Gender based violence and SRH-Sexual & Reproductive health issues are other key areas where Anchal is intervening to support target communities.

Covers the needs of vulnerable sections of society – female sex workers and migrants. An additional component of this programme is SRH – Sexual and reproductive Health care has been added under this initiative creating a First in such initiatives in this specific area of concern. Evolving priorities have necessitated the implementation of holistic, participatory and culture-sensitive programmes in the target area.



**TI – Targeted Intervention HIV/AIDS** is a very clearly conceived and thought-out programme meeting international standards and conventions. Trained staff need to study the entire programme and the reasons behind various activity initiatives. This makes the entire programme an important part of the learning process. The initiative exposes all care-givers, family members and stake-holders to the long-term consequences of ignoring certain safe-guards and precautions recommended by medical professionals.

**Anchal Charitable Trust** in collaboration with DSACS is implanting project on HIV & AIDS for vulnerable section of society that are on high risk of HIV/AIDS. The targeted population includes Female Sex Workers, Migrant Worker and other population who are considered at High Risk. The core aim of different HIV & AIDS oriented project aims at:

- 1) Reducing prevalence of HIV/AIDS in the targeted communities and reduce the level of stigma and discrimination arising out of ignorance associated with HIV/AIDS.
- 2) Ensuring the sustainability of the programme by empowering the local service providers, community leaders, and vulnerable children (Peer Educator)
- 3) Ensuring that the target community leads a healthy risk-free life by promoting VCT process for early diagnosis.
- 4) Empowering PLHIV clients on home-based care and improving their health status and linking them with Community Care Center.
- 5) Empower Support Group and Local Service Providers to sensitize the community with comprehensive information on HIV/AIDS and its prevention.
- 6) Prevent the spread of HIV within the community by focusing PE involving vulnerable children and local service providers.
- 7) Improving access to quality Sexual and Reproductive Health (SRH) information, education and services (including HIV) for FSWs (Adult and younger) to better identify and exercise choices to address their health needs.
- 8) Improving involvement of regular partners to enhance the uptake of SRH/HIV services by FSWs.
- 9) Sensitize medical professionals and government functionaries involved with policy decisions and help them formulate suitable alternative welfare and STD/AIDS related support service
- 9) Improved awareness in regard to the pension scheme of the government of the National Capital Territory of Delhi (NCT Delhi) for HIV positive individuals living in Delhi and registered with the concerned ART Center.
- 10) Conduct regular 'Advocacy' activity/meetings with local leaders, legislators, bureaucrats, government functionaries and other authority to introduce suitable legislation ensuring access to all infrastructure facilities for these underserved segments of society.
- 11) Provides pre- test, post-test, crisis and adherence counselling to the high-risk population. To improve the client's understanding about the disease and its management, and to adopt healthy lifestyle. So that he/she improves the quality of life.

➤ **Coverage**

- Female Sex Workers: 4,000

- Migrant workers: 22,000
- Other vulnerable population: 26,000

### The Activities

The following activities are being carried out under the programme:

- Outreach
- Behaviour Change Communication/ Interpersonal communication
- Services
  - Promotion/distribution of free condoms
  - Provision of basics STI and health services
  - Linkages to others health services (ICTC, TB, STI etc)
- Enabling Environment / Community mobilization
- Treatment –ART / Counselling

Anchal has got multiple donor support under this initiative and is planning to reach vast population through camp approach.

### TECH MAHINDRA FOUNDATION

#### Tech Mahindra project on Children with disability for Promoting Inclusion of Persons with Disabilities –Supported by Tech Mahindra

**Understanding disability:** Disability is part of the human condition. Almost everyone will be temporarily or permanently impaired at some point in life, and those who survive to old age will experience increasing difficulties in functioning. Most extended families have a disabled member, and many non-disabled people take responsibility for supporting and caring for their relatives and friends with disabilities.

Every epoch has faced the moral and political issue of how best to include and support people with disabilities. This issue will become more acute as the demographics of societies change and more people live to an old age.

Responses to disability have changed since the 1970s, prompted largely by the self-organization of people with disabilities, and by the growing tendency to see disability as a human rights issue. Historically, people with disabilities have largely been provided for through solutions that segregate them, such as residential institutions and special schools.

Policy has now shifted towards community and educational inclusion, and medically focused solutions have given way to more interactive approaches recognizing that people are disabled by environmental factors as well as by their bodies. National and international initiatives – such as the United Nations Standard Rules on the Equalization of Opportunities of Persons with Disabilities – have incorporated the human rights of people with disabilities, culminating in 2006 with the adoption of the United Nations Convention on the Rights of Persons with Disabilities (CRPD).



At Tech Mahindra Foundation, disability is the third major area of intervention to empower all to Rise. We work relentlessly towards ensuring that Persons with Disabilities get social inclusion and equal opportunities of work for a better future. This is done through our two premier disability programs- ARISE+ (All Round Improvement in School Education for Children with Disabilities) and SMART+ (Skills-for Market Training for Persons with Disabilities). The Foundation mandates that 10% of all its beneficiaries are Persons with Disabilities.

**NIPMAN FOUNDATION**

**Anchal Charitable Trust** is dedicated to rehabilitate children with special needs. We cater the needs of physically and intellectual disabled children and ensure to prevent neglect, apathy and ignorance and provide basic services and social inclusion. We work in coherence with different organizations and make sure that the challenged individuals find a respectful employment with us or with other institutions.

Poor literacy, social and lack of employment opportunities make the challenged the most excluded segment of the society. We work towards mitigating the negative attitudes towards of the society towards these children. We strive for early diagnosis, parental help and getting adequate opportunities for training to restore and rehabilitate these children.





We disseminate the message that mental retardation is not a disease and it is a condition where a person has certain limitations in mental functioning affecting communicating skills. These limitations slow down the learning skills and it takes a longer time to develop skills like walking, speaking, eating and taking care of personal needs.

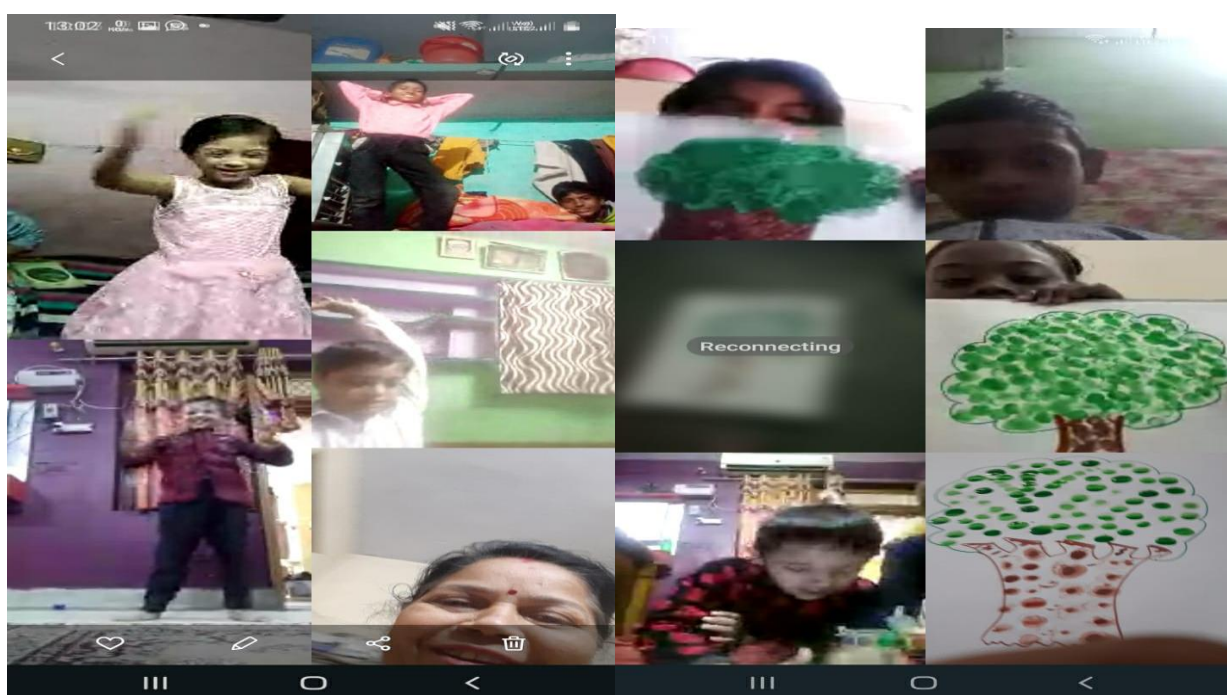
The services provided by Anchal cover a wide range of children in difficult circumstances such as children with learning disabilities, neglected children, street children and the children from the slums of North East and Shahdara districts of National Capital Region of Delhi.

Moving on same line Anchal has identified some low-income group communities and urban slums of North East and Shahdara district under its projects on disability with the objective to improve quality of life of persons with disabilities especially children with disabilities through provisions of rehabilitation and referral services. Under rehabilitation services following major services are provided:

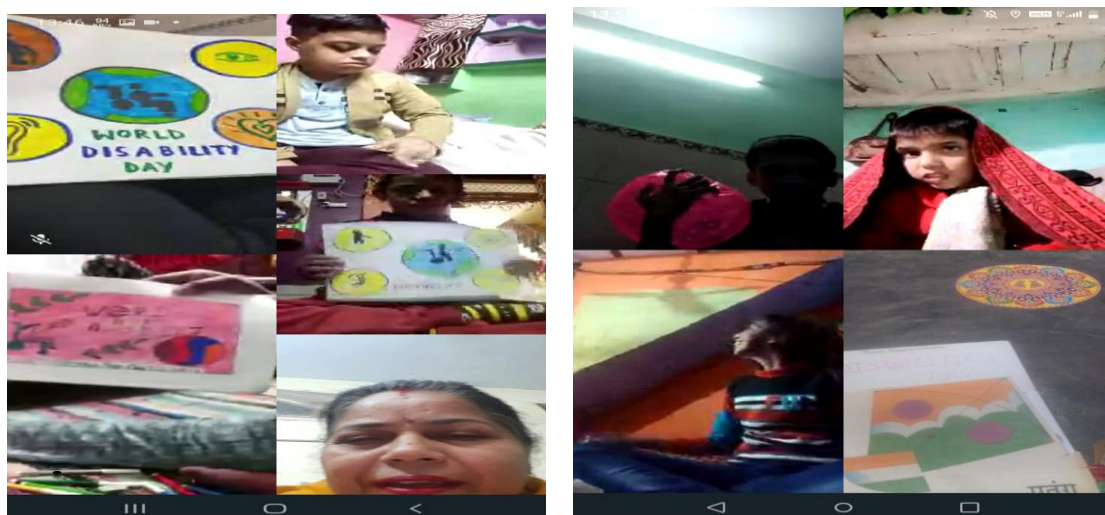


1. Occupational Therapy to the Children with Disabilities (CwDs) at centre and at community,
2. Special Education to the CwDs,
3. Mainstreaming children with disabilities to formal education system,
4. Linking of PwDs and CwDs to government disability welfare schemes such as disability certificate, disability pension, disability rail and bus concession schemes, disability unique identity card, Niramaya health insurance and legal guardianship.
5. Training to parents/ care givers of CwDs on behavior modification, gender identity and adolescent issues and care of children with specific disabilities and basic therapies.
6. Provision of mobility aids such as wheel chair, tricycles, crutches, rollators, walking canes, AFO etc to PwDs and CwDs through health camps.

7. Provision of need based adaptations and developmental aids such as corner chair, cerebral palsy chair, standing frame, modified tooth brush/combs and toilet chairs to CwDs,
8. Undertaking home modification such as building of ramps, installing exercise bars and toilet bars at CwDs home,
9. Identification and training of volunteers from the targeted community on basic therapies and disability related issues and information,
10. Formation and strengthening of advocacy-based groups RTI and MCD group and voicing issues pertaining to delivery of services to PwDs and CwDs,
11. Guidance to PwDs, parents and caregivers of CwDs on different issues such as vocational training, engagement of child in productive work etc.
12. Celebration of special days such as World Disability Day on 3rd December
13. Celebrating sports day and children day.

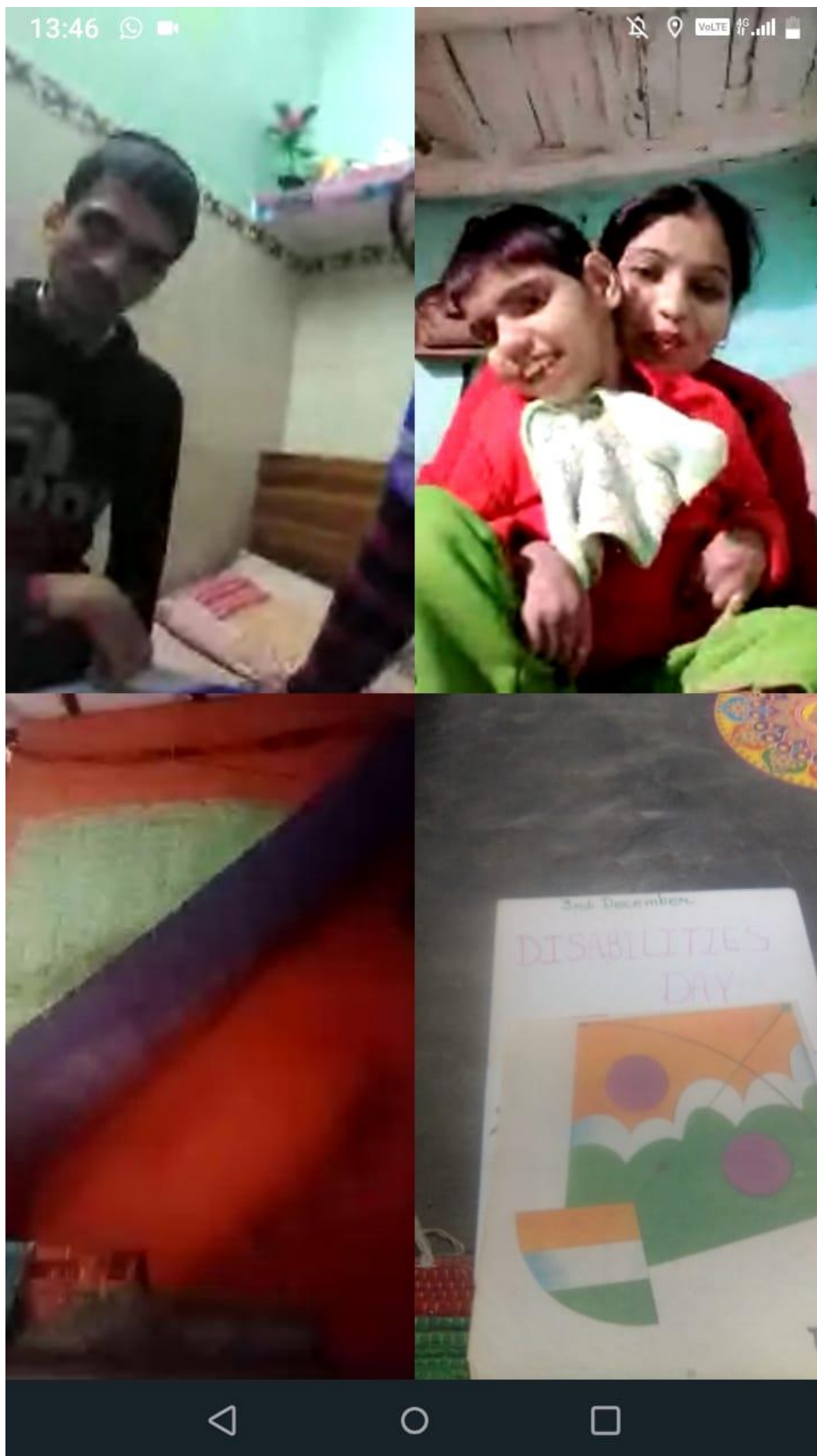


## VIRTUAL CLASSES PICTURES











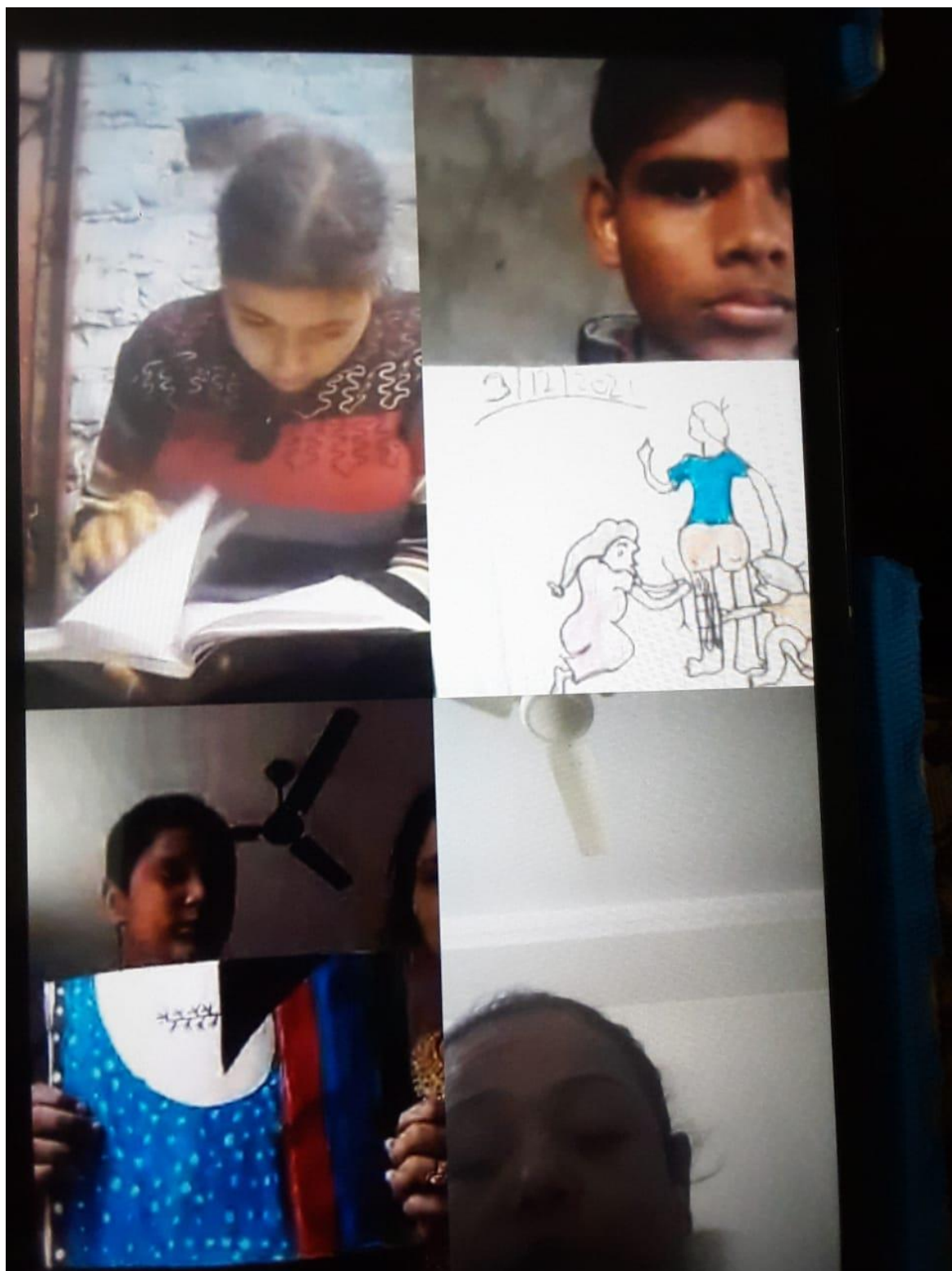


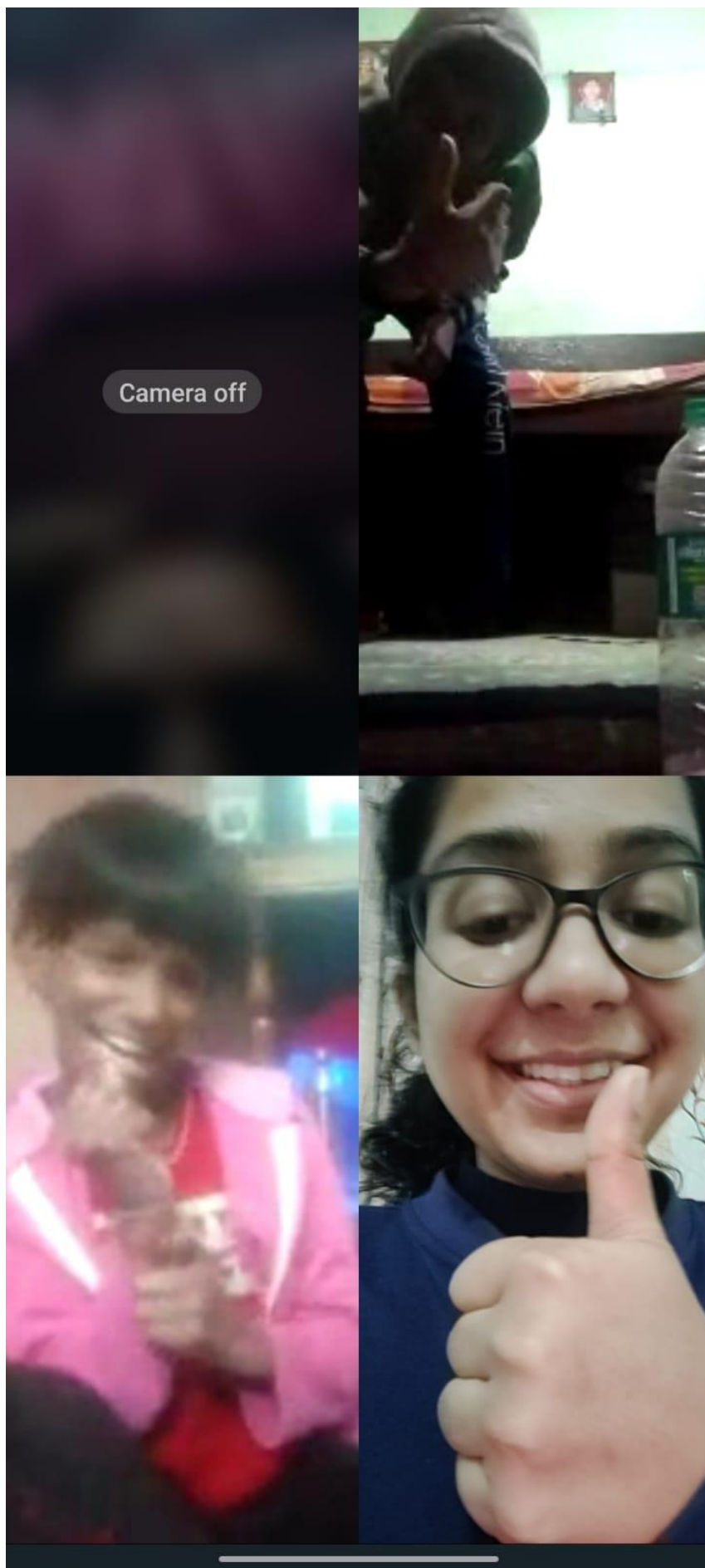












Anchal has strong cadre of community volunteers who forms one of the important epitomes of its relation with the targeted community. These volunteers apart from providing home based basic therapeutic exercises to the children with disabilities also sensitize community members about rights of persons with disabilities. The aim is to reach and provide support to each and every child with disability found in such difficult situation. Since people and children with disability face discrimination in one or another aspect of their life, the organization strongly advocates for their rights and entitlements and promotes inclusion in all projects.

### HEART AND HAND FOR THE HANDICAPPED (HHH)

**Anchal Charitable Trust (ACT)** is dedicated to rehabilitate children with special needs. We work towards mitigating negative attitudes towards these children and strive for early diagnosis, parental help and adequate opportunities for training to restore and rehabilitate them. The Anchal Team is dedicated to the education of physically and mentally challenged children and, to ensure and prevent neglect, apathy and insensitive behavior to ensure improved comprehensive services.

Anchal is a grassroots organisation minus the frills. The Anchal team is programmed to establish an ethos of sustainability in all training programmes relating to the challenged and ensures that the joys of enabling another human being, step-by-step with contribution through hands-on execution of live social projects develops immense confidence and an ability to disseminate observations to envisage possible changes to improve and better the achievements of the challenged child.

For the Anchal Team this is certainly an experience; the essence of individual and innovative thought requiring pragmatic training ensuring sustainability. Ultimately, as all teachers know from experience, teachers, care-givers and other stakeholders must put in their very best in every area of intervention relating to the challenged since success is slow and or, delayed necessitating extra time.

**Anchal** continues to put in the very best by way of effort, by the best personnel to train, to sensitise and explain the urgent need for such programmes. However, the susceptibility and commitment of stake-holder, funding and philanthropic institutions remains the crucial factor on the path to achieve specific targeted changes.

### HEART AND HAND FOR THE HANDICAPPED (HHH)

**Heart and Hand for the Handicapped (HHH)** is a not-for-profit tax-exempt 501(c) (3) organization that raises funds to support differently able children with physical and mental challenges such as polio, cerebral palsy, autism, Down's syndrome and blindness and other vision problems in India. HHH was founded in 1971 by five South Asian ladies who wanted to make a difference

in the lives of differently able children in India. The organization is run by volunteers who lend their expertise in different areas.

An organization that serves the ideal of philanthropy and adhere to the highest standard of professional practice, treating everyone with respect and dignity. Over the years, funds have been donated to over 200 organizations in India. Our expense ratio per IRS filing is less than 15% of the revenue. Organizations that receive our grants must meet or exceed our rigorous standard for qualification and align with our mission. We raise funds through annual dinners, walk-a-thons, direct mail solicitations, United Way and corporate matching programs. We also accept donations of stocks and bonds.

The serving the many DIFFERENTLY-ABLE children with special needs have been a tremendous challenge at all the organizations we support to the **Anchal Charitable Trust.**

Anchal Activities through the Lockdown period and After COVID -19 Creating unprecedented challenges At Anchal we were professionally focused and restricted to our target beneficiaries and the geographic location of our activity – we refused to be carried away with the blitzkrieg of information and opinions from all over – we were confronted with a massive population of migrant labour, construction workers, domestic household workers and sex-workers – the last segment totally ignored in a situation which offered no alternatives and no chance of survival.

India cutting aside the political pep-talk has more on its hand than it could handle and what no body admitted was a community spread that happened despite the total lockdown.

Delhi-NCR was and continues to be one of the worst affected areas due to the pandemic. The migratory population, slum population, daily wage earners, hawkers, construction sites workers were high risk category.

#### **Activities undertaken by Anchal**

Our Focus area remains Disability, Health and Child Rights to which we have dedicated over 25 years – the COVID 19 pandemic effected this segment in an extreme and adverse manner because they are not a government priority, they are not a vote bank and have no voice in parliament.

#### **Anchal Intervention – The Challenged during the COVID 19 pandemic**

Relief to the challenged is necessary on any number of issues – it is important for them to move around under absolute curfew conditions. It is impossible to explain to a challenged child or individual why she/he is unable or, not allowed to move out.



A worse scenario emerged when it came to their activities of daily need and hygiene – totally denied of any space, confined to their beds – this confining of a large number of people in small spaces created new problems of their own.

**Azim Premji Foundation, (The Philanthropy) supports to the Anchal special Children, Goal and Objectives.**

Goal : All children with disability are ensured the basic rights of survival, development, participation and protection

*Children in India grow up and develop in safe and enabling environments that ensure that their right to protection is respected and realized, and that they can grow and develop free from abuse, discrimination and exclusion.*

#### **Main Objective**

To improve quality of life of persons with disabilities especially children with disabilities living in urban slums of Delhi through provision of rehabilitation and referral services;

#### **Specific project objectives (results):**

- Establishment of model rehabilitation centres for disabled children.
- Children/adults with disabilities have access to rehabilitation services at community level
- Persons with disabilities have increased access to rights and entitlements provided by different stakeholders including government through increased awareness and knowledge on the rights of persons with disabilities
- Children with disabilities access mainstream primary inclusive education in MCD (Municipal Council of Delhi) schools in the target communities.

#### **Target Groups and Beneficiaries**

Under the proposed project disabled children and their families will be the target beneficiaries. Children will be the primary beneficiaries while parents and other family members will be secondary beneficiaries.

#### **Total Target population**

The target group includes the disabled children Population in Delhi. The project will be implemented in selected areas Delhi. The selection of the area will be based on the number of disabled children. The proposed target group for the project is the entire community, in general. However, the proposed projects aim to work with the following stakeholders in particular:









**State level:** The respective State Government; Medical Fraternity; Legal Community and Bar association; NGOs and civil societies; Youth Forums; Rehabilitation council

**District level:** District level administrative machinery; Medical Fraternity; Legal Community and bar association; NGOs and civil societies; Youth Forums

**Block Level:** Block level machinery; Medical fraternity; Legal Community; NGOs and civil societies; Youth Forums and Panchayati Raj Institutions (local government).

**Community level:** Panchayati Raj Institutions (local government); SHGs, CBOs (Community Based Organizations), Youth Forums

#### Project Main Activities:

- **Establishment of Model CRRC (Community Resource cum Rehabilitation Centers:** The CRRC will play a crucial role in providing specialized rehabilitation services to children with disabilities.
- **Awareness Generation:** Information Education and Communication (IEC) programmes and media campaigns to generate mass awareness and skill building with different stakeholders.
- **Coalition Building:** Establish coalition with like-minded individuals, NGO, INGOs, institutions, bilateral and multi-lateral organizations and youth groups for institutional learning and advocacy.
- **Building Linkages with Government:** Advocate and Coordinate with state and district government machineries for Rehabilitation of disabled children through establishing regular dialogue and capacity building.
- **Data analysis:** regular population data analysis and tracking at community, district and state level.





#### Detailed description of activities:

- Activities for Expected Result 1 – Establishment of model rehabilitation centers for disabled children
- Activities for Expected Result 2 Children with disabilities have access to rehabilitation services at community level:
- Activities for Expected Result 3 – Persons with disabilities have increased access to rights and entitlements provided by different stakeholders including government through increased awareness and knowledge on the rights of persons with disabilities:
- Activities for Expected Result 4 – Children with disabilities access mainstream primary inclusive education in MCD (Municipal Council of Delhi) schools in the target communities.

### 1. Case study:

#### DEEPAK (Spina Bifida)

Deepak, a 11 years old boy, lives with his family consisting of parents and 3 siblings in Nand Nagri, a resettlement colony in Delhi. Deepak's father worked as a daily labourer and mother is a housemaid. His 6 members family lives in a small room. He has **Spina Bifida** with 50% permanent locomotor impairment. He has been unable to stand and walk and is dependent on his mother for all activities of his daily living. His sitting balance was also poor because of weak abdominals and back muscles. He remains in his parents' lap. Because of his physical condition he remains isolated from the society.

Deepak's mother came to know about Anchal When one parents of Children With Disability met her in the community and told her about Deepak's disability and bring her to Anchal Centre where services were available for children like Deepak under Anchal's Saksham Project. At Anchal Centre he was enrolled in **therapy services** and **classes**. His Parents were also given information on how to access **schemes** available for persons with disabilities.

After Six months of therapy and therapeutic recreation classes, Deepak is now able to stand and walk with support using a knee ankle foot orthosis (KAFO). He is able to sit and his lower limbs are in correct position. He is also able to sit up on his own. He is able to perform simple daily activities like going to the toilet, bathing and dressing with a little help. He has given modified toilet chair as he has difficulty in squatting position. After muscle strengthening, stretching and KAFO his mobility has increased. Anchal helped him to get a **KAFO** by connecting her with service providers including the local government. He got **health insurance** through **Niramaya, an initiative of the local government**, and a railway travel concession certificate after a local hospital provided him with a disability certificate. He will also get his **disability allowance (pension)** soon which is being processed by the government.

According to Deepak's mother – **"The KAFO has enabled him to go around in the neighbourhood and make friends. He likes to come to the centre for therapeutic activities."**

### 3. Case study:

#### Vikas (Cerebral palsy with Intellectual disability)

Vikas, a 15 years old boy, lives with his family consisting of parents and 1 uncle in Sunlight colony, a J J Cluster in Delhi. Vikas's father worked as a factory worker and getting 4000/- per month. He has **spastic cerebral palsy (Rt hemiparesis) with moderate intellectual impairment**. He has been unable to stand and walk independently and is dependent on his mother for all activities of his daily living. His standing balance is very poor. He has great difficulty in moving his right upper and lower limbs and because of his physical condition he could not attend school.

When the outreach workers of Anchal, were doing an awareness raising session in the community to identify persons and children with disabilities, Vikas's mother met them. She told them about Vikas's disability and she was told to bring him to the Centre where services were available for children like Vikas under Anchal's Saksham Project. The next day, Vikas was brought to the Anchal Centre where he was enrolled in **therapy services**. He and his parents were also given information on how to access **schemes** available for persons with disabilities.

After Six months of therapy and classes, Vikas was able to stand using a knee ankle foot orthosis (KAFO). His spasticity of Right upper and lower limbs has been reduced. By **home modification (Hand railing)** his indoor mobility has increased. And His hand function has improved and he is able to perform simple daily activities like going to the toilet, bathing, dressing and eating with a little help. He has availed the **modified toilet chair** as he has difficulty in squatting. And further after six months therapy **now, he is able to walk independently with KAFO**. Anchal helped him to get **KAFO** by connecting him with service providers including the local government. He also get the admission in the mainstream school after her parents got the information on RTE (Right to education) from Anchal. He has been declared eligible for **health insurance** through **Niramaya, an initiative of the local government**, and for a railway travel concession certificate after a local hospital provided her with a disability certificate. He has been declared eligible for **pension** for the children with disabilities.

According to Vikas's mother (Mrs Sumitra) – **"Vikas is able to go to neighbourhood for playing since his therapy began with Anchal. He looks forward to going to the centre for therapeutic recreational classes."**

## 2. Support & services provided during pandemic COVID – 19

Anchal with *28 Formidable Years* confronting challenges of an extreme nature – the COVID 19 is a challenge extraordinaire.

The Anchal story is one of social inclusion of the most vulnerable and most abused segments of society with activities covering three States – Delhi, Uttar Pradesh and Uttarakhand. Our work priorities today are focused on Disability and Child Rights.

Anchal – Identifying /Defining Below Poverty Line (BPL) Families  
& Most Vulnerable Individuals

- Identity & Confirmation – Documents Necessary at the time of Registration
- Aadhar Card
- BPL Card/Ration Card
- Employed – Nature of Employment Self-employed / Salaried/ Part-time/daily wage
- Salary/Monthly remuneration /Income
- State of Migration
- Period of Stay in NCR Delhi / Ghaziabad, Uttar Pradesh
- Issue of 10000 health Cards to the disadvantaged
- User Charge Chart

### Professional Staff

Professional Staff appointed by the Governing Body of Anchal is composed of qualified social work professionals, grassroot social workers and outreach professionals for mobilizing, counselling, Awareness Building and Advocacy. Medical professionals and para medics working with Anchal have come together in a common spirit of philanthropy and working for the common good of the economically depressed and most vulnerable segments in society. The stress is upon perfection and delivery of the best services at all times

This team of dedicated social work and medical professionals are fully responsible for delivery of quality care to the target social segments all of whom are from the most depressed and vulnerable social segments.

**The Anchal Charitable Trust** has maintained all its essential services through-out the lockdown period to ensure that not a single challenged or vulnerable individual or child is deprived of her/his basic care – food, medicine, sanitization and hygiene in any form, conditions and or, changes in the work situation.

This has been very tough in view of the fact that the local civil administrations and law enforcement agencies refused to apply their minds at all and simply added more and more restrictions and oppressive and abusive behaviour. This has meant very high costs to keep employees at work at a very demanding, crucial time and severe

restrictions on any form of movement to avoid greater risk arising of the **COVID 19 pandemic** while ensuring the maintenance of essential services.

Continuous on-going activity of Awareness Building among the residents of the entire area from **March 10, 2021** in regard to the **COVID-19 pandemic** and the ways and means to combat it while ensuring total safety for individuals and their family members. The importance of being clean inside-out – maintaining high levels of cleanliness at all times

It is important for people to disinfect their clothes and their bodies before entering their homes to protect their children from the COVID 19 virus.

Not to be under any stress upon issues relating to COVID 19, be protected and calm – not to panic under any stress situation.

- The importance that after ensuring individual protection to venture out and ensure that people on the streets and daily wage earners follow instructions and protection basics being stressed by the government.
- Awareness building – the importance of hand-washing, use of sanitizers.
- Ensuring protection of your friends by maintaining a distance from even your nearest and dearest family members.
- Provided cooked food for over 600 construction site workers in Ghaziabad from March 25, 2021 onward for five days.
- Provided cooked food for over 450 local labour, rickshaw pullers, domestic workers, daily wage construction workers at Kalandhar Colony, Seemapuri and Shahdara.
- Employed local people and established unit to produce face masks for protection from COVID 19 and distributed these masks for free to people working during the lock-down to prevent the advance of COVID 19
- Awareness Building in the area has helped Sanjeev Sheel by way of support rolling in from locals, residents, business establishments and others on the principal – keep your own house and its environments clean – in no time did Shri Sanjeev Sheel achieve cooperation from everyone because people realised that their own premises and environments were becoming cleaner, safer places.
- People requiring medical aid and support were given immediate attention from the Anchal Comprehensive Health and Rehabilitation Centre free of cost.
- The activities of Shri Sanjeev Sheel has helped tremendously in building awareness in regard to COVID 19 and the ways and means to arrest its progress.



- Free distribution of basic food material like rice, flour, pulses, soap and other goods have been distributed to over 3500 displaced families in Ghaziabad and NCR of East Delhi in collaboration and support of Shri Balaji Chouhan of HCL Technologies
- Medical support has been extended to every person along-with access to free medicines and other essential tests and diagnostics.

### **Anchal Healthcare Center**

**ANCHAL CHARITABLE TRUST- A RAY OF HOPE FOR URBAN POOR.**

Anchal extends basic health-care needs to the underprivileged in the most challenging parts of Delhi and NCR slums relating to health, food scarcity, and child development. Anchal understands the importance of health and addresses the issue by providing basic health care facilities to the children and the needy at their door step.

Through our collective efforts, children and their caregivers have consistent access to health infrastructures resources and, food; develop health-seeking habits and practices to maintain health and food security and, obtain the skills and resources necessary to be independent in managing both health practices and food sources. For additional information please refer to [www.anchalindia.org](http://www.anchalindia.org)

This is a programme that attracts the attention and imagination of even senior members of our staff who consider it a brutal exposure to the India of 900 million people without any health coverage or government programmes that reflects the challenge posed by deficiencies in the health-care initiatives of the day for a vast majority.

**The Anchal Charitable Trust** is extremely grateful to all its sponsors and contributors over the past 28 years, who have made it possible for us to provide the required health, cultural, and educational services necessary for a growth story that leaves no one behind.

The **Anchal** story is one of social inclusion of the most vulnerable and neglected segments of society with activities covering three States – Delhi, Uttar Pradesh and Uttarakhand. Our work priorities today are focused on **Healthcare and Disability**.

### ***Anchal Healthcare Centre***

Ahas been established by Anchal Charitable Trust with the view to provide comprehensive quality healthcare under one roof. AHC has five main units like a complete pathological lab, radiology unit, Super Specialty OPD of different doctors like Orthopaedic, heart, Sugar, General Ailments, Dental Unit, Eye Care, Cancer Care, Homeopathy, Ayurvedic and other related services.

The **Anchal Healthcare Centre** is a dedicated charitable institution for healthcare services to the underserved, excluded and the most vulnerable with only a token charge/contribution for services.

The Hospital is approved by the Health Department of the government of Uttar Pradesh complete with all legal niceties since its inception two years ago. The hospital sees a daily footfall of over 150 patients with different healthcare problems. In this last year ending March 2021 Anchal has *benefitted over 46,800 patients with great success.*

#### **Anchal Healthcare Centre – Medical Services to the Excluded through Covid 19**

**Anchal** through the two waves of **Covid-19** has done remarkable work in terms of distributing a months' raw food material for 5500 families, medicines for the poor, oxygen and concentrator support and other need-based services like covid testing etc. 500 volunteers have been trained towards community-based rehabilitations of covid positive patients.

#### ***Anchal Health Centre – Vision for Urban Poor***

The **Anchal Healthcare Centre** is a comprehensive healthcare and rehabilitation state-of-the-art specialty healthcare centre providing full services for a token sum of money to the most vulnerable and economically depressed segments without any discrimination what-so-ever.

#### ***Photo Gallery of Anchal Health Centre***





**ADVOCACY AND NETWORKING:**

Anchal is an active member of Dilli Bal Adhikar Manch. The organization with the effective networking of all of its members ensures and safeguards the rights of the children. Secondly, Anchal time to time organizes seminars, workshops and meeting to discuss different issues related to child development. The organization is also member of Local Level Committee for the Shahdara District. The committee is responsible for appointment of legal guardian for persons with Autism, Cerebral Palsy, Mental Retardation and Multiple Disabilities for their protection and property in collaboration with office of District Deputy Commissioner.

**MANAGEMENT AND GOVERNANCE****MANAGEMENT**

The activities are carried out by a core team of seven led by the Executive Director. In addition, 9 CBR workers at the federation level are supported by ACT. Altogether a total of 20 persons are actively engaged in the work. The Senior Management Team consisting of Executive Director, Senior Programme Managers Finance Officer, ensures that programme management and implementation is smooth. FCRA, Income Tax related matters and all statutory requirements were completed on time.

**GOVERNANCE**

The Governing body of ACT met three times during the year to assess the progress in work. The Annual General Body meeting was held on every year. The members of the Governing Body are:

Shri Sanjeev Sheel – Managing Secretary– Professional Social Worker, Shri Rajesh Sharma – President– Finance Professional, Seema Chaudhary – Vice President– Teaching Professional, Atul Jain– Treasurer– Business, Vikas Kumar – Member– Pharma Business, Alok Dadich – Member– IT Consultant, Vibhor Mittal – Member– IT Business.

All donations get 50% tax exemption under Section 80G of the Income Tax Act

Sanjeev Sheel  
Managing Secretary